



# GMT MONTHLY MEMBERSHIP PROGRESS REPORT

Results as of: 5/31/2020

Multiple District 318

LOCATION: INDIA

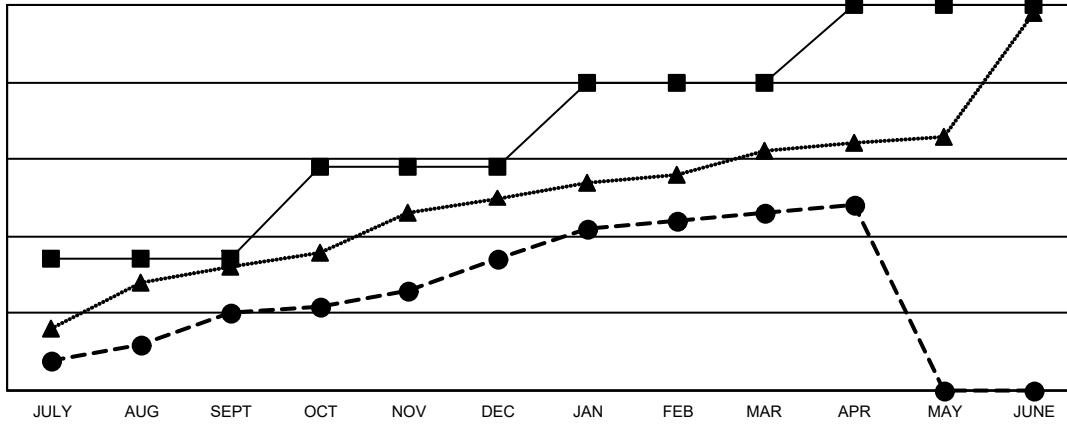
GMT: OPEN

GMT CA 6

| Clubs                 |               |           |               |
|-----------------------|---------------|-----------|---------------|
| RESULTS FOR 2019-2020 |               |           |               |
| QUARTER               | NEW CLUB GOAL | NEW CLUBS | DROPPED CLUBS |
| JULY/AUG/SEPT         | 17            | 10        | 4             |
| OCT/NOV/DEC           | 12            | 7         | 30            |
| JAN/FEB/MAR           | 11            | 6         | 1             |
| APR/MAY/JUNE          | 10            | 1         | 0             |

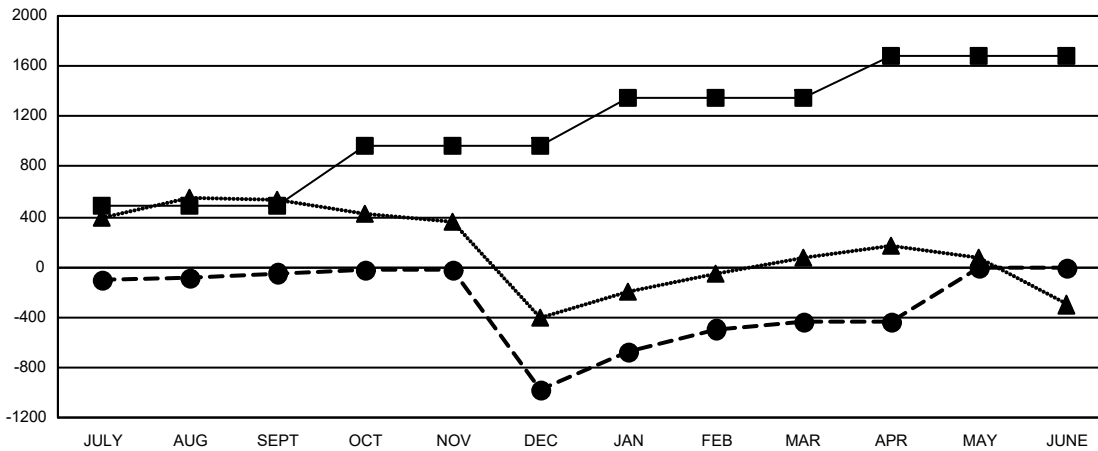
| Members               |                        |                      |  |
|-----------------------|------------------------|----------------------|--|
| RESULTS FOR 2019-2020 |                        |                      |  |
| QUARTER               | MEMBER GROWTH NET GOAL | MEMBER GROWTH ACTUAL | DROPPED MEMBERS ACTUAL (including transfers) |
| JULY/AUG/SEPT         | 485                    | 713                  | 690  |
| OCT/NOV/DEC           | 480                    | 451                  | 1,374  |
| JAN/FEB/MAR           | 385                    | 978                  | 294  |
| APR/MAY/JUNE          | 325                    | 98                   | 102  |

GOALS AND ACTUAL NEW CLUBS CUMULATIVE



- - CURRENT YEAR GOALS FOR NEW CLUBS
- - CURRENT YEAR ACTUAL NEW CLUBS
- ▲ - LAST YEAR ACTUAL NEW CLUBS

GOALS AND ACTUAL MEMBERS CUMULATIVE



- - MEMBER GROWTH NET GOAL
- - MEMBER GROWTH ACTUAL
- ▲ - LAST YEAR MEMBERSHIP ACTUAL

|                        |   |                                       |
|------------------------|---|---------------------------------------|
| DROPPED CLUBS: 35      | 371 CLUBS OF 687 ADDED 1 OR MORE NEW MEMBERS              | <b>GENDER DISTRIBUTION</b>            |
|                        |   | MALE 19,184 (81.34%)                  |
|                        |   | FEMALE 4,402 (18.66%)                 |
| <b>DROPPED MEMBERS</b> | <a href="#">CLICK HERE FOR CUMULATIVE MEMBERSHIP DATA</a> | TOTAL FAMILY UNIT MEMBERS 7,875       |
| DECEASED 80            |   | FAMILY MEMBERS PAYING HALF DUES 4,135 |
| CLUB CANCELLED 699     |   |                                       |
| OTHER 1,681            |   |                                       |
| <b>TOTAL 2,460</b>     |   |                                       |